

RENOVATED HOME

# Trading SPACES

*By reversing the open-plan layout of their Victorian home, the owners and their children are now able to enjoy the benefits of both personal and family time*

WORDS NATALIE WAIN  
PHOTOGRAPHS DAVIDE LOVATTI

## SITTING ROOM

This room was reinstated to create a formal yet comfortable space for entertaining. Accents of blue and green add vibrant notes to the neutral palette, with metallic pieces for a fresh, modern feel. The sofa and floor lamp were inherited from Ben's father, Christopher Wray.

Interior design, Tor Vivian, Tor Interiors, [torinteriors.com](http://torinteriors.com). Izzy loveseat, £940, [Sofa.com](http://Sofa.com), [sofa.com](http://sofa.com). Loveseat seat pads in Ozone, £150m, Kit Kemp at Christopher Farr, [christopherfarrcloth.com](http://christopherfarrcloth.com). Curtains in Lindow Linen F0354/16, £22m, [Clarke & Clarke](http://Clarke & Clarke), [clarke-clarke.com](http://clarke-clarke.com). Sir large square coffee table, £2,150; Sir side table, £936; Testona floor lamp (base only), £1,395, all Christopher Wray, [christopherwray.com](http://christopherwray.com). Walls in Elephant's Breath estate emulsion, \$45 for 2.5L, [Farrow & Ball](http://Farrow & Ball), [farrow-ball.com](http://farrow-ball.com).



#### DINING AREA

The clock face overlooking this welcoming space at the back of the house is one of two that were made in the 1980s for the original Christopher Wray shop façade. As the masonry was unable to take their weight, however, neither was ever put up, until now. **Iona table**, £499; **Iona bench**, £279, both Made, made.com. **Chair seats** in Sahara II in Teal, £30m, Kirkby Design, kirkbydesign.com. **Chair backs** in Belinda 04834/04, £110m, Manuel Canovas at Colefax and Fowler, colefax.com.



#### KITCHEN

Bold blue cabinets are a striking contrast to crisp white walls. 'There were no compromises made in this room,' says Tor. 'This is where Arabella cooks for the family and also for her businesses, the Alpine Bar and Gallery Café at Chel-Ski and Clip 'n Climb.' **Cabinetry** in Stiffkey Blue estate eggshell, £60 for 2.5L, Farrow & Ball, farrow-ball.com. **Xavier Pauchard Tolix-style chairs**, £79 each, Cult Furniture, cultfurniture.com.







Could our passion for open-plan homes be on the wane, as our desire grows for rooms where we can each relax in peace, away from the bustle and noise of daily life? This is certainly the case for Ben and Arabella Wray who, after 10 years of living in their open-plan Victorian terraced house in south-west London, have just completed a renovation to reverse the process. As their children, Oscar, Poppy and Grace (now aged 15, 14 and 12 respectively), approached their teenage years, there came an inevitable shift in family dynamics and the boundaries needed to be redrawn. This state of affairs led to the couple calling on interior designer Tor Vivian to help establish a new kind of harmony. We spoke to Arabella and Tor to find out more.

#### What had attracted you to the original property?

**AW** Ironically, it was the open-plan layout. The previous owners had already extended the property at the back and had opened up the ground floor. The house had a lovely feel about it and we were able to move in straight away. It suited us perfectly; we spent most of our time in the communal space, which was ideal for keeping an eye on three young children.

#### What prompted the recent renovation?

**AW** We adore the house and its location, so moving was never really an option, but its openness no longer worked for us as a family. The children are older now and crave more privacy, as do Ben and I, so it made sense to start again, from scratch, creating new spaces that are more separate. We particularly wanted a formal grown-up area which we could use for entertaining and we also wanted to excavate the basement to provide much-needed extra space; the children now use this as their den.

#### Why did you decide to work with interior designer Tor Vivian?

**AW** It was an ambitious project so we needed someone we could trust to oversee things from start to finish. Ben and I had worked with Tor on our Chel-Ski London ski centre business, so we knew we loved her work, and being my sister-in-law, she had a unique insight into our family.

#### How did you go about the renovation?

**TV** Arabella and her family moved out of the house for almost a year while we stripped it back to its bones and built it up again. When it came to reconfiguring the layout, we began by restoring the double reception room at the front of the house, providing Ben and Arabella with somewhere that they can use for entertaining, as well as a room where they can curl up and watch a film. Meanwhile, the first floor was rearranged to accommodate the children, and the top floor was transformed into a bedroom and bathroom for Ben and Arabella. The space up there is fairly compact but we also managed to fit in a small kitchenette, an office and a dressing room, which has upholstered cabinetry to enhance the luxurious, cocooning feel that Arabella wanted.

#### Can you tell us about your vision for the interior?

**AW** We wanted a relaxed, versatile home, with space to grow, literally and metaphorically. A neutral palette of soft greys and whites feels sophisticated and has the timeless look we wanted, while dashes of vibrant colour and quirky details add personality. Otherwise, our taste is fairly contemporary and, thanks to Tor, we have incorporated some industrial elements here and there. The children were also very involved in the process, and worked with Tor to create their own individual spaces that will stand the test of time.

#### KITCHEN

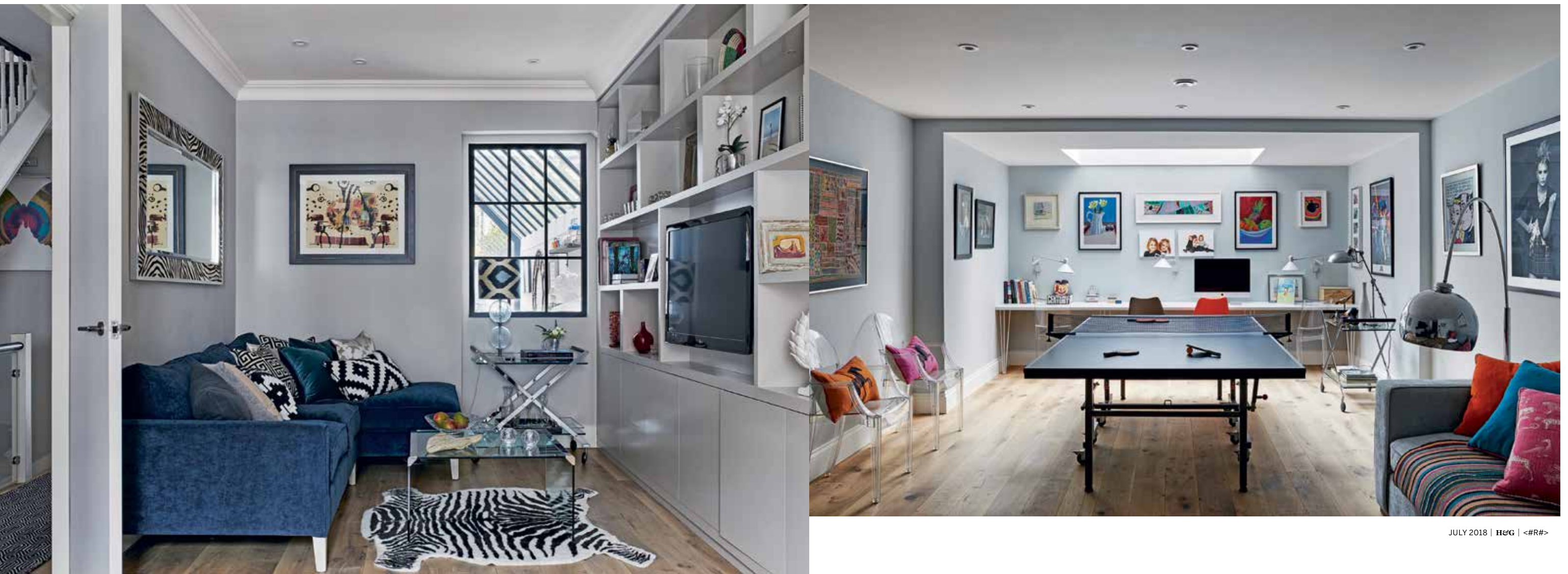
'Although this space (far left) is not huge, we've managed to fit in a couple of integrated fridges, four ovens and a Barazza hob,' says Tor. **Bespoke kitchen**, King Cabinet Makers, kingcabinetmakers.co.uk. **Hob** LAB IPLB3T, around £1,170, Barazza, barazzasrl.it.

#### SITTING ROOM

This end of the newly configured room (below left) serves as a relaxing space for watching television, with storage and display for objets d'art. 'I created three or four different layouts for this space so Ben and Arabella could make an informed decision,' says Tor. The Crittall-style window in the new partition provides a link to the kitchen and allows natural light to flow through. **Bespoke sofa**, Claremont Sofa Designs, claremontsofadesigns.co.uk. **Sofa** in Smooth in Nightshadow, £40m, Kirkby Design, kirkbydesign.com. **Saxon mirror**, from £3,990, Simpsons, simpsonslondon.com.

#### CHILDREN'S DEN

The generous ceiling height in the basement is emphasised by a skylight that floods the new den (below) with natural light. 'This is very much a space for the children to call their own,' says Arabella. 'We now all have our places around the house where we can retreat to when we like, but we still have the kitchen where we can gather together as a family. It's the perfect balance.' **Louis Ghost chairs**, £504 set of two, Philippe Starck at Kartell, kartell.com. **Bow floor lamp**, £119, Made, made.com. **Walls** in Skylight estate emulsion, £45 for 2.5L, Farrow & Ball, farrow-ball.com. **Architectural consultation**, Ian Hossack, A3 Associates, a3associates.net.







#### POPPY'S BEDROOM

Hot pink accents and a bright mix of patterned cushions (left) combine with silver-grey wallpaper, blinds and bedding to bring a sophisticated feel to this 14-year-old's room.

Window seat and blind edging in Sahara II in Magenta, £30m, Kirkby Design, kirkbydesign.com. Icelandic sheepskin rug, £60, John Lewis, johnlewis.com. Reversible cotton and silk quilt in Grey, £229.99, Zara Home, zarahome.com.

#### GRACE'S BEDROOM

This space (below left) was designed with versatility in mind. Shelves allow Grace, aged 12, to change her display of decorative objects against the backdrop of the subtly patterned wallpaper, while the blue glass window, added by the previous owners, is a quirky touch. Coquine wallpaper ML2211, £51 a roll, Osborne & Little, osborneandlittle.com. Foxy table lamp base in recycled green glass with Empire shade in Apple Chambray, £130, Pooky,

pooky.com. Serengeti multi cushions, £49 each, Andrew Martin, andrewmartin.co.uk.

#### POPPY'S BATHROOM

A penchant for flamingos was the starting point for this pretty scheme (below). The marble-topped vanity unit and fluffy sheepskin stool add notes of glamour without overpowering the compact space.

Flamingos wallpaper 95/8045, £85 a roll, Cole & Son, cole-and-son.com. Mongolian sheepskin stool, £229, Suburban Salon, suburbanсалон.co.uk.

Grosvenor polished-chrome sconces 1108001, from £60 each, Astro, astrolighting.com. Blanco marble hexagon tiles (on floor), £9.95 for 290x285mm sheet, Walls and Floors, wallsandfloors.co.uk.



#### OSCAR'S BEDROOM

Oscar tasked Tor with creating a Banksy-themed scheme for his room. 'We briefly considered covering the walls with a mural, but felt it wouldn't have longevity,' says Tor. Instead, a concrete-style feature wall captures the cool urban feel that Oscar wanted and is the perfect backdrop for Banksy prints and vintage furnishings.

Bare Concrete Wall wallpaper mural, £36sq m, Murals Wallpaper, muralswallpaper.co.uk. Lenox mango wood and metal vintage desk, £344, Maisons du Monde, maisonsdumonde.com. Blinds in Inka 05, from £35m, Malabar, malabar.co.uk. Cult Living Bauhaus stackable chair, £59, Cult Furniture, cultfurniture.com.





#### MAIN BEDROOM

'I wanted our bedroom (left) to be a sanctuary, like a luxury hotel room,' says Arabella. With this in mind, Tor used faux fur cushions and throws for cocooning softness, and brass studwork and exotic mother-of-pearl elements to give the room scheme a tailored yet decorative finish.

**Headboard** in Herringbone in Light Grey, Abraham Moon, £36m, moons.co.uk. **Tundra wolf faux fur bed runner**, £165, Faux Fur Throws, fauxfurthrows.com. **Bedside cabinets**, £390 each, Iris Furnishing, irisfurnishing.com. **Aged glass lamp bases**, £120 each, John Lewis, johnlewis.com. **Empire shades** in Black cotton, £45 each, Pooky, pooky.com.

#### DRESSING AREA

Tor overcame the challenge of this compact space by installing a Crittall-style wall

(below far left) to separate part of the bedroom without blocking light. She designed the fabric-covered chest of drawers, which conceals a television, to match the wardrobes beyond.

**Bespoke wardrobe and TV unit**, King Cabinet Makers, kingcabinetmakers.co.uk.

#### MAIN BATHROOM

As a nod to the heritage of the property, this room (also below left) has a Victorian aesthetic. 'It feels opulent and is also a nice contrast to the contemporary style used elsewhere in the house,' says Arabella.

**Lewisham freestanding oval double ended bath**, £1,168, Essential Bathrooms, essentialfromideal.com. **Belgravia lever bath shower mixer**, £810, Crosswater, crosswater.co.uk. **Patisserie Sucre 2 tiles** (on floor), £2.99 each, Fired Earth, firedearth.com.

