

HOMES & GARDENS[®]

NOVEMBER 2017
£4.50

INDIVIDUAL STYLE

SMART HOMES IN TOWN AND COUNTRY

DESIGNER CHIC
BRILLIANT NEW LIGHTING
STRIKING SOFAS
SCULPTURAL ACCESSORIES

AUTUMN GARDENS
THE DELIGHTS OF A SENSORY
SCHEME, WOODLAND PLANTING
AND ORNAMENTAL GRASSES

SIMPLE PLEASURES

DECORATING IDEAS FOR A TRANQUIL HOME, FIRESIDE
INSPIRATION, PLUS DELICIOUS RECIPES FOR APPLES AND PEARS



DINING AREA

When they were younger, each of the children had their own chair, brightly painted by Philippa. Now that the chairs are outgrown, they hang on the wall, their colours chiming with paper bells – Christmas decorations which, one year, were never taken down. For similar paper decorations, try RE, re-foundobjects.com.



NEW-BUILD HOME

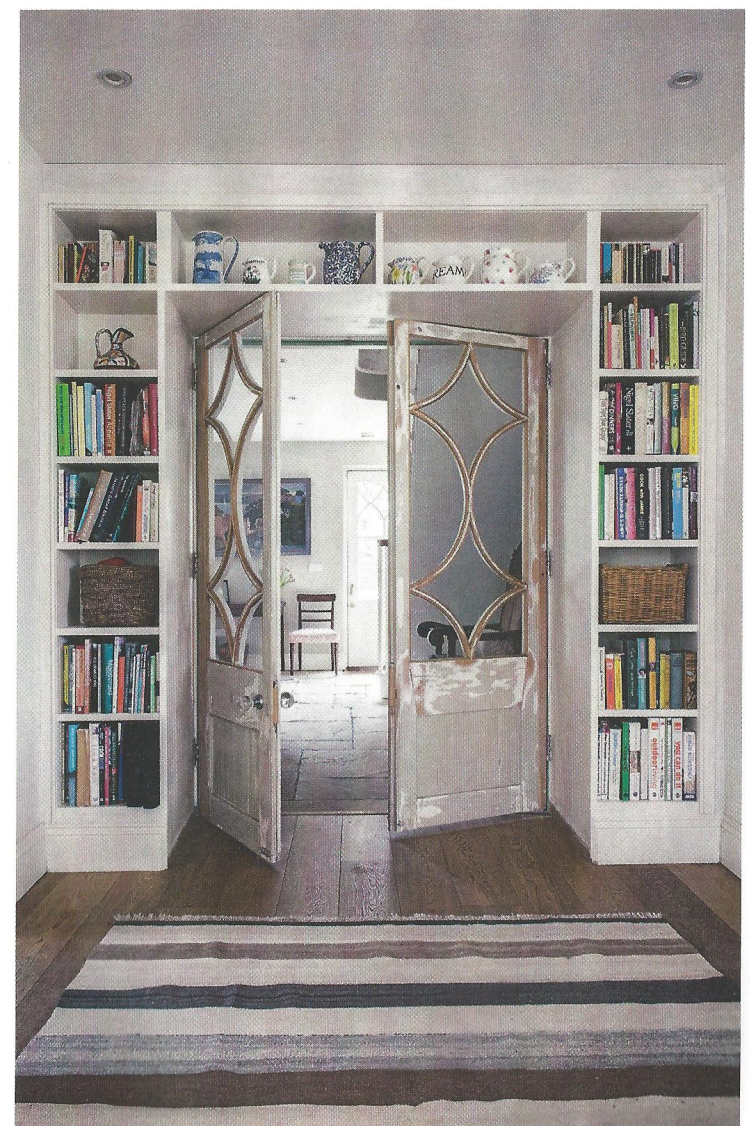
Fairy-tale ENDING

Having taken seven years to plan and build from scratch, this Yorkshire property, in the style of a rustic cottage orné, has all the allure of a charming home from a children's storybook

WORDS JESSICA DOYLE PHOTOGRAPHS JODY STEWART

HALL
Wicket, the family's dog, sits on a kilim-covered sofa in this cosy library space, with shelves painted blue to link with the picture frames. Double doors (below right), from Rupert's parents' house, lead to the kitchen.
Bookcase in Oval Room Blue, Estate Eggshell, £60 for 2.5 litres, Farrow & Ball, farrow-ball.com.
Artwork over fireplace by David Kirk, Goldmark Gallery, goldmarkart.com.

KITCHEN
"We wanted something quite modern and easy to clean," says Philippa of this open-plan space (right). Angled wall lights allow the mood to be easily changed.
Interior and kitchen design, Tor Vivian, Tor Interiors, torinteriors.com. Cabinetry, Butterfly Furniture, butterflyfurniture.co.uk.
Tolomeo Parete mini wall lights, £152 each, Artemide at Paper Rooms, paperrooms.co.uk.





HALL

The front door opens into a generously sized space (above), which Philippa and Rupert use as a library and sitting room. Walls in Hardwick White, Estate Emulsion, £43.50 for 2.5 litres, Farrow & Ball, farrow-ball.com.

BOOT ROOM

Tor designed the shelving (left), with a neatly incorporated bench, to surround the internal window to the kitchen.

DINING AND SITTING AREA

Philippa found the two antique armchairs (above right) on eBay and covered one in pink and the other in green fabric, a pairing that became the starting point for the room's decorative scheme.

EXTERIOR

The house (far right) is set in woodland in the Nidderdale Area of Outstanding Natural Beauty. Architect, Hugh Petter, Adam Architecture, adamarchitecture.com.

Picture an idyllic woodland cottage and Rupert and Philippa Abrahams' Yorkshire home may come to mind. The newly built house sits amid the Nidderdale Area of Outstanding Natural Beauty (AONB), on land bought by Rupert's parents in the late 1970s and later offered to their son and daughter-in-law as somewhere to create their own home.

LABOUR OF LOVE

Open to the challenge, the couple had decided to knock down an existing one-storey structure and replace it with this modern version of a cottage *orné*, a stylised, Romantic-era rustic retreat. The AONB status of the area meant it took four years for planning permission to be granted and a further three years for the building work to be completed. However, the result – a home with an exquisitely conceived structure, full of character and architectural details with inviting living spaces – was well worth the wait.

ROOM TO GROW

Having an interior designer in the family (Rupert's sister, Tor Vivian) meant that Philippa was able to involve her in the project from the start. "Tor knows our style and she also understands what a family needs."

In terms of the arrangement of the rooms, they decided on an open-plan kitchen, dining and sitting room, a large hall that doubles as a sitting area and library for Philippa and Rupert, and a side entrance with a boot room. There is also a separate playroom which, when the children are





MAIN BEDROOM

Philippa covered the sofa at the end of the bed (left) using off cuts of vintage fabrics taken from a sample book given to her by a curtain-maker friend. Walls in Green Blue, Estate Emulsion, £43.50 for 2.5 litres, Farrow & Ball, farrow-ball.com.

BEDROOM

Instead of buying new furniture, Philippa revamped pieces the family already owned, including this armchair (below left), which she has updated with a pretty offset of printed fabric.

BATHROOM

Tor designed the vanity unit with a look that ties in with the architectural style of the house. Marlin bathroom wall light, £654; silk shade, £121; both Porta Romana, portaromana.com.



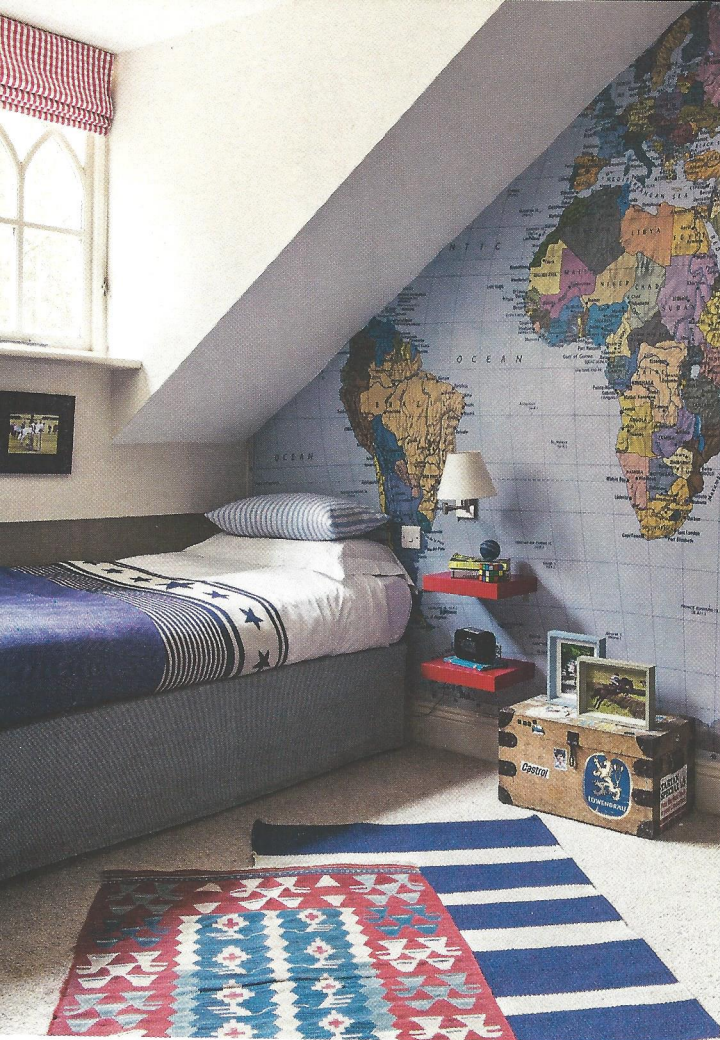
older, will become a more grown-up sitting room. "When you've got a home that you intend to stay in, it's good to plan ahead and to think about what you'll need in ten years' time," advises Tor. To that end, she devised a lighting scheme for the playroom that currently illuminates the piano but which will, in future, focus on shelves and bookcases, the designs for which she has already drawn up. "I tend to go a bit overboard with lights," she says. "You can always turn them off, but it's hard to add them later."

PATCHWORK OF PATTERN

As the house has been designed to evolve with the family, so its decoration has developed over time, an advantage of the long design-and-build phase. "It was quite organic," says Philippa. "Tor told me to pick a couple of colours and to work outwards from there. I love pink and green together, so that was the starting point for many of the rooms."

Furniture that Philippa had collected over the years, including family heirlooms and pieces picked up at auctions and junk shops, have been reupholstered in a decorative mix of pattern and colour. "We felt that we already had lots of lovely furniture, so we bought very few new pieces," says Philippa, who covered several chairs and a sofa herself in patchworks of fabric offcuts.

The overall look is one of comfort, colour and ease, a relaxed ambience that belies the meticulous thought and care that has gone into its planning. Although it is a house that was seven years in the making, it will be at the heart of its owners' lives for many more to come.



SON'S BEDROOM

Philippa's pattern-on-pattern style is showcased perfectly in this room (above), where the map mural, which was found online and cut to fit the wall, is contrasted with a colourful ikat fabric on an armchair bought from a local auction house.

Chair, Tennants of Leyburn, tennants.co.uk. **Chair in Sokoto in Rust,** £55m, Andrew Martin, andrewmartin.co.uk.

World Map wall mural, £44.99, Wallsticker Warehouse at Amazon, amazon.co.uk.

DAUGHTER'S BEDROOM

This pretty scheme (left) was put together with a number of good finds: the bed was outside a wrought-iron factory, the side table was bid on at auction, and the armchair was a Freecycle piece that Philippa painted and recovered with a variety of fabrics.

For similar striped and floral fabrics, try Cabbages & Roses, cabbagesandroses.com.